

OCTOBER 2016

EUROPEAN POLITICAL CALENDAR: CRUCIAL DEADLINES

IN 2016
A TURNING POINT WAS REACHED


December 4th 2016


December 25th 2016


April 23rd - May 7th 2017

August 23rd - October 22nd 2017

 **UK:**
UE/Brexit referendum

 **SPAIN:**
new general election

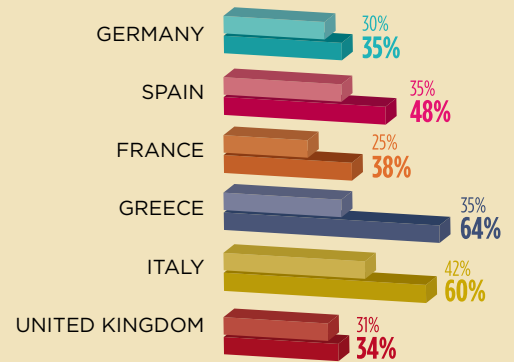
 **ITALY:**
constitutional referendum 2016

 **SPAIN:**
3rd general election expected

 **FRANCE:**
presidential election

 **GERMANY:**
federal election

COFACE INDICATOR OF POLITICAL RISK (2007/2016)



SELECTED VARIABLES

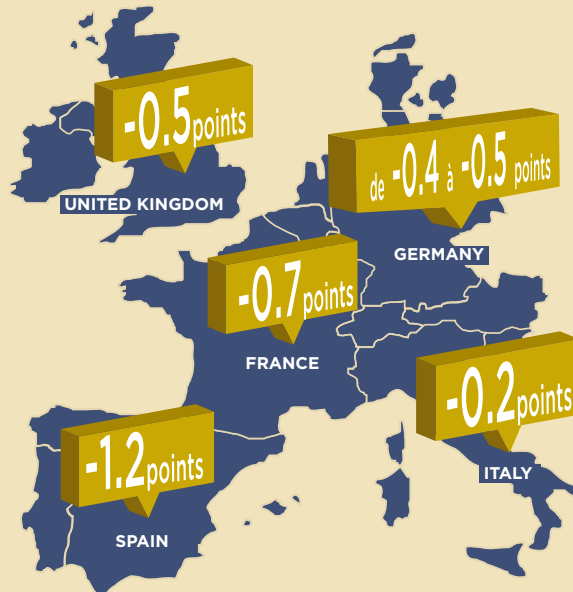


IMPACT OF A MAJOR POLITICAL SHOCK ON EUROPEAN GROWTH

Economic growth and political risk are connected: 2 transmission channels


Market volatility


Lack of confidence of companies and households

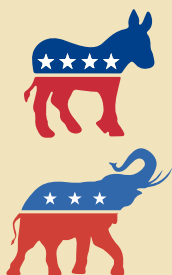


In case of a Brexit-like shock

Average growth down by **0.5 points**

COMPANIES CONFIDENCE IS MORE SENSITIVE TO POLITICAL UNCERTAINTY THAN THAT OF HOUSEHOLDS

US PRESIDENTIAL ELECTIONS OF NOVEMBER 8TH 2016



IN CASE OF DONALD TRUMP'S VICTORY
Growth down by **1.5 points** within a year

A BIGGER SHOCK FOR EUROPEAN ECONOMIES
Growth down by **2 points** within a year



Systemic role of US economy